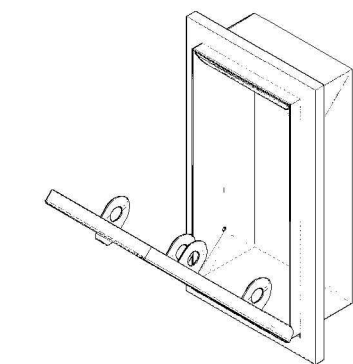
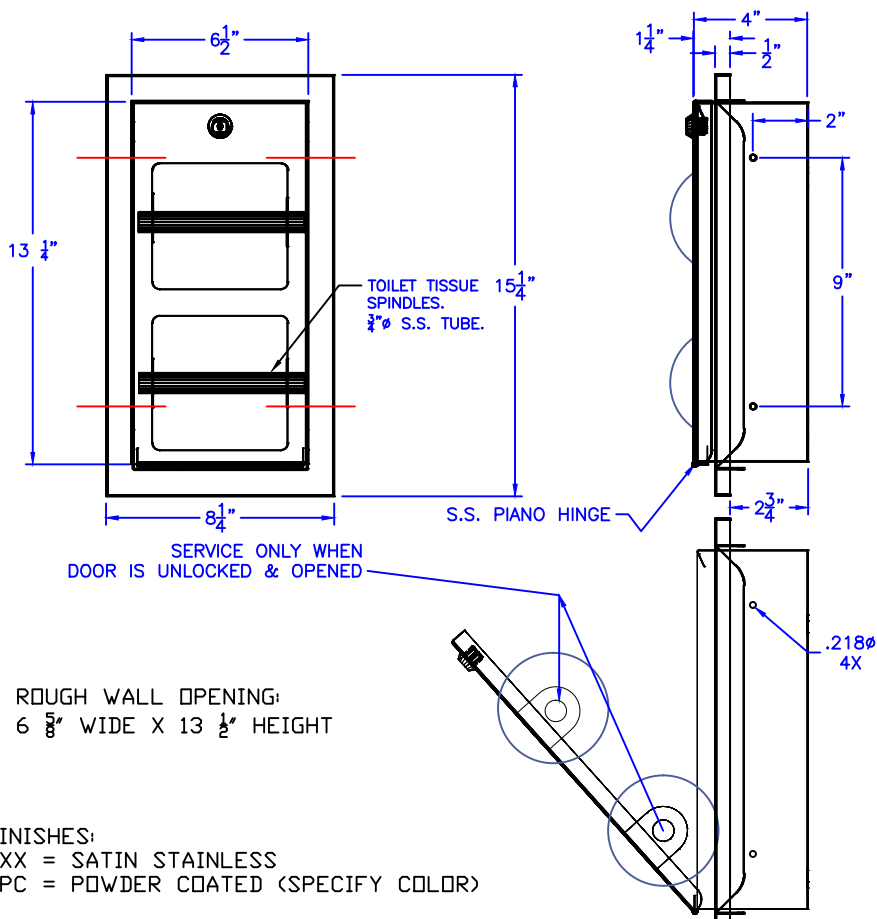
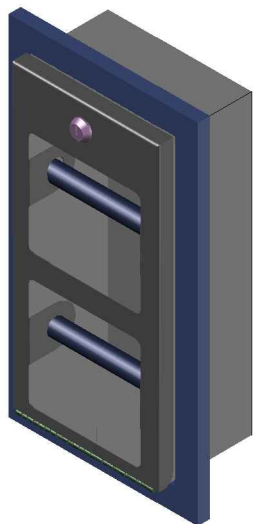




Technical Data

C-2030-XX

MULTI-ROLL TOILET TISSUE DISPENSER, RECESSED MOUNT



Construction:

CABINET: 22 GAUGE TYPE 304 STAINLESS STEEL, ONE PIECE CONSTRUCTION.
DOOR: 22 GAUGE TYPE 304 STAINLESS STEEL, FASTEN TO CABINET WITH PIANO HINGE. EQUIPPED WITH TUMBLER LOCK AND KEY.
FLANGE: 18 GAUGE TYPE 304 STAINLESS STEEL SEAMLESS CONSTRUCTION.
SPINDLES: 3/4" X .035 WALL STAINLESS STEEL TUBE, RETAINED IN DOOR WHEN CLOSED AND LOCKED.

Operation:

UNIT HOLDS TWO STANDARD TOILET TISSUE ROLLS UP TO 5 1/4" DIAMETER. TISSUE ROLLS ARE LOADED AND SECURED INSIDE DOOR.
DEPLETED ROLLS CAN ONLY BE REMOVED AFTER UNLOCKING DOOR.

Installation:

PROVIDE FRAMED ROUGH WALL OPENING: 6 5/8" X 13 1/2".
MINIMUM RECESSED DEPTH REQUIRED IS 2 3/4".
COORDINATE WITH ENGINEER FOR ANY OBSTRUCTIONS INSIDE WALL.
MOUNT UNIT WITH SHIMES BETWEEN FRAMING AND CABINET AT ALL MOUNTING POINTS.
UNLOCK DOOR AND REMOVE SPINDLES.
USE UNIT AS TEMPLATE TO LOCATE HOLES (4).
DRILL HOLES AND FASTEN TO WALL USING (4) HOLES (FOR #10 SCREW NOT PROVIDED)
LOAD SPINDLES WITH STANDARD TOILET TISSUE ROLLS & INSERT BACK INTO DOOR SPINDLE HOLDERS.
CLOSE AND LOCK DOOR.

Guide Specification:

RECESSED MOUNT MULTI-ROLL TOILET TISSUE DISPENSER CONSTRUCTED FROM TYPE 304 STAINLESS STEEL.
(2) THEFT-RESISTANT STAINLESS STEEL SPINDLES HOLD STANDARD TOILET TISSUE ROLLS UP TO 5 1/4" DIAMETER.
TUMBLER LOCK AND KEY ALLOWS FOR SERVICE OF DEPLETED ROLLS.
DOOR SECURED TO CABINET AND PIVOTS OPEN WHEN UNLOCKED FOR SERVICE.
FINISHES ARE AS LISTED. POWDER COATED COLORS ARE AVAILABLE- SPECIFY COLOR.